

## SolarTech Power Solutions

# What is wind power used for communication base stations



## Overview

---

Can wind energy be used to power mobile phone base stations?

Worldwide thousands of base stations provide relaying mobile phone signals. Every off-grid base station has a diesel generator up to 4 kW to provide electricity for the electronic equipment involved. The presentation will give attention to the requirements on using windenergy as an energy source for powering mobile phone base stations.

How can wind energy help a telecom tower?

Contact Freen to discuss wind energy options for your infrastructure. Hybrid renewable energy systems are ideal for telecom towers in areas where grid connection is expensive or unavailable. Combining wind turbines, solar panels, and battery storage creates an efficient solution. These systems ensure energy availability around the clock.

How can a small wind turbine help the telecom industry?

As the push for net-zero carbon emissions accelerates, the telecom sector must adopt innovative, renewable energy solutions for telecom sites. Small wind turbines provide a secure and cost-effective alternative. They ensure telecom towers run smoothly, even in remote and challenging environments.

What are small wind turbines for remote telecom towers?

Small wind turbines provide a secure and cost-effective alternative. They ensure telecom towers run smoothly, even in remote and challenging environments. This article explores how small wind turbines for remote telecom towers are revolutionizing energy solutions, highlighting their benefits and practical applications.

Can wind turbines be used for telecom towers?

Natural disasters like bushfires and floods exacerbated the problem. To address this, Diffuse Energy, a Newcastle-based startup, developed small-

scale wind turbines for telecom towers. Supported by \$341,990 in funding from the Australian Renewable Energy Agency (ARENA), they installed turbines at 10 remote sites.

Why do off-grid telecommunication base stations need generators?

As the incessant demand for wireless communication grows, off-grid telecommunication base station sites continue to be introduced around the globe. In rural or remote areas, where power from the grid is unavailable or unreliable, these cell sites require generator sets to provide power security as prime power or backup standby power.

## What is wind power used for communication base stations

---



### Multi-objective cooperative optimization of communication base ...

Sep 30, 2024 · This paper develops a method to consider the multi-objective cooperative optimization operation of 5G communication base stations and Active Distribution Network ...

### Understanding the role of base stations in wireless communication

Jan 20, 2023 · Overall, base stations play a critical role in wireless communication by providing the link between mobile devices and the wired network, enabling communication and ...



### Communication base station power station based on wind ...

A wind-solar hybrid and power station technology, applied in the field of communication, can solve problems such as the difficulty of power supply for communication base stations, and



achieve ...

---

## Simulation and Classification of Mobile Communication Base ...

Dec 16, 2020 · In recent years, with the rapid deployment of fifth-generation base stations, mobile communication signals are becoming more and more complex. How to identify and classify ...



---

## Exploiting Wind Turbine-Mounted Base Stations to ...

Sep 28, 2021 · We investigate the use of wind turbine-mounted base stations (WTBSs) as a cost-effective solution for regions with high wind energy potential, since it could replace or even ...

---

## How Solar Energy Systems are Revolutionizing Communication Base Stations...

Nov 17, 2024 · Energy consumption is a big issue in the operation of communication base stations, especially in remote areas that are difficult to connect with the traditional power grid,



...

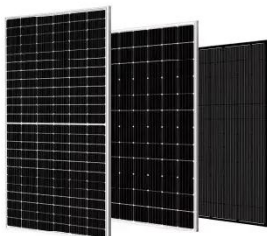


## Optimised configuration of multi-energy systems ...

Dec 30, 2024 · Additionally, exploring the integration of communication base stations into the system's flexibility adjustment mechanisms during the configuration is important to address the ...

## Optimal configuration of 5G base station energy storage ...

Feb 1, 2022 · The high-energy consumption and high construction density of 5G base stations have greatly increased the demand for backup energy storage batteries. To maximize overall ...



## Communication Base Station Energy Power Supply System

The wind-solar-diesel hybrid power supply system of the communication base station is composed of a wind turbine, a solar cell module, an integrated controller for hybrid energy ...

## Energy storage system of communication base station

Energy storage system of communication base station Base station energy cabinet: floor-standing, used in communication base stations, smart cities, smart transportation, power ...



## Wireless Communication Base Station Location Selection ...

Jun 9, 2024 · To solve the shortcomings of existing methods, this article applies the Convolutional Neural Networks (CNN) to the research on the positioning of wireless communication base ...



## Connecting Large Offshore Wind Farms with ...

Oct 13, 2022 · Offshore wind farms are typically located in remote areas, making it challenging to establish reliable connectivity using public mobile networks. ...



## Contact Us

---

For catalog requests, pricing, or partnerships, please visit:  
<https://posecard.eu>