

## SolarTech Power Solutions

# What is the maximum voltage of a 48v inverter



## Overview

---

How many volts can a 48 volt inverter run?

Some 48v systems have a 150v limit, and others have 500v or more. In general, you can put in series as many panels as you want to want, up to the limit. Whether they be 36 or 72 cell panels. Just be careful of minimum voltage, especially with 150v max inverters.

What is a 48v battery?

The term “48V” refers to the nominal voltage, which is the average voltage during use. However, the actual voltage of a battery system will vary throughout the charging and discharging cycle. Nominal Voltage: 48V is the average working voltage of the system. Maximum Voltage: The highest voltage reached when the battery is fully charged.

Do I need a 12V or 48V inverter?

Simply put, if you have a 12V system, you need a 12V inverter; a 48V system requires a 48V inverter. Standard Pure Sine Wave inverters simply change DC power to AC power. Inverter Chargers handle this function plus allow you to charge your batteries off shore power or a generator. Renogy’s 3500W Solar Inverter Charger is designed for a 48V system.

What voltage is a 12V inverter?

Inverters come in various configurations, each designed for specific power systems. Common rated input voltages include 12V, 24V, and 48V. The choice depends on the application, the size of the power system, and the available power source. A 12V inverter is commonly used for smaller applications, such as in vehicles or small off-grid setups.

What is the input voltage of an inverter?

Understanding the inverter voltage is crucial for selecting the right equipment for your power system. Inverter voltage typically falls into three main

categories: 12V, 24V, and 48V. These values signify the nominal direct current (DC) input voltage required for the inverter to function optimally. What is the rated input voltage of an inverter?

.

How many volts does an inverter need?

For grid-tied systems, this is typically 220V or 230V in most countries. For off-grid systems, it might be 48V or 24V, depending on your battery configuration. Ensuring this rating matches your power system's output guarantees that your inverter will efficiently convert energy without risk of damage.

## What is the maximum voltage of a 48v inverter

---



### MPP Solar Inc » Inverter Selection Guide

6 days ago · While not necessarily applicable to all inverters, most small output inverters are designed in 12v, and as output increases, the demand for system voltage is raised to 24v or ...

## Understanding the Cut-off Voltage for a 48V Battery:

...

Aug 20, 2024 · The cut-off voltage for a 48V battery typically ranges from 42V to 44V. This is the minimum voltage at which the battery should be discharged to prevent damage and ensure ...

 **TAX FREE**    



**European Warehouse**



7-15 days

ONE-STOP SOLUTION

65kWh 30kW

130kWh 30kW

130kWh 60kW

## Backup Time of 100Ah 48V Lithium Batteries Introduction

Oct 9, 2024 · To calculate the backup time (T) of a 100Ah 48V lithium battery, we first need to calculate the total energy (E) stored in the battery. The energy can be calculated using the ...

## Inverter Battery Voltage: How Many Volts Are Needed For ...

Mar 27, 2025 · An inverter battery typically operates at 12V, 24V, or 48V. These voltages represent the nominal direct current (DC) needed for the inverter's function.



## Understanding the Normal Working Voltage of a 48V Inverter

What Is the Normal Operating Voltage Range for a 48V Inverter? When discussing 48V inverters, one of the most common questions is: "What's the normal working voltage?" Simply put, a 48V ...

## The Differences Between 24v and 48v Inverter: ...

Apr 13, 2025 · 24V and 48V inverters have different input voltages, and inverters with different voltages must be matched to the correct equipment. If your TV ...



**ESS**


## Inverter DC ripple voltage specification

Mar 21, 2022 · I'm trying to get some clarity on the DC ripple specifications relating to Victron inverter/chargers. There is contradictory data in different places, and a lack of clarity, not to ...

## What size fuse between battery and inverter?

Apr 22, 2024 · Step 1: determine the maximum amount of current your inverter is going to pull (at the lowest battery voltage) and multiply it by 1.25 to find the ...



## 48V Solar Inverters: 2025 Buyer's Guide & Top ...

Apr 3, 2025 · A 48V solar inverter converts direct current (DC) generated by solar panels into alternating current (AC), specifically designed for 48V battery ...

## EG4® FLEXPRESS21 HYBRID INVERTER

Aug 7, 2025 · Y B R I D I N V E R T E R

The EG4 FlexBOSS21 is a versatile 48V split-phase, hybrid inverter/charger that offers the same dependable power as the 18kPV with enhanced ...



## Calculate Battery Size For Any Size Inverter ...

Mar 3, 2023 · Battery size chart for inverter Note! The input voltage of the inverter should match the battery voltage. (For example 12v battery for 12v inverter, ...

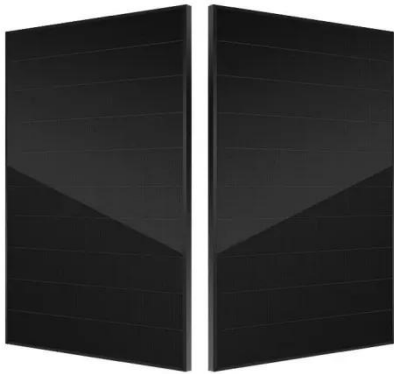
## A Complete Overview of 48V Batteries and Their ...

May 30, 2025 · This comprehensive guide delves into the voltage levels, capacity considerations, and practical applications of 48V batteries, providing valuable ...



## How Many Batteries For A 5KVA/48V Inverter? Answered





Sep 2, 2022 · Depending on the maximum voltage of the charge controller, the system will need at least 2 panels in series while charging 48V batteries. Still, it will function considerably better ...

---

## For a 48v system what voltage panels are needed

Dec 22, 2020 · Open Circuit Voltage (Voc), which is the maximum voltage that the panel can achieve at maximum illumination under ideal conditions at some "normal" temperature.



---

## EG4® 12kPV HYBRID INVERTE

Mar 10, 2025 · Y B R I D I N V E R T E R  
The EG4 12kPV is a 48V split-phase, hybrid inverter/charger capable of utilizing 12kW of PV input and efficiently outputting 8kW of power ...

---

## Understanding inverter voltage

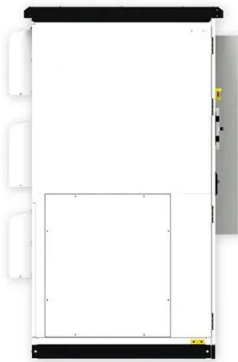
Jan 10, 2024 · Inverter voltage typically



falls into three main categories: 12V, 24V, and 48V. These values signify the nominal direct current (DC) input voltage required for the inverter to function ...



 **LFP 48V 100Ah**



## What is the maximum input voltage of a 48v inverter

Input Voltage: The input voltage supplied from the DC source to the inverter follows the inverter voltage specifications, which start from 12V, 24V, or 48V. Input Current: determines the ...

## When to Use a 24V or 48V Battery System Instead of a 12V ...

But 960W would be our limit with 24 volts. If we need more power, we then would have to increase our voltage to 48V. This could be achieved either with a 48V battery or 2 24V ...



## Multiplus II 48V/5000:

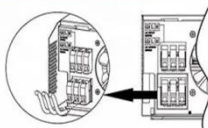
Parallel (Parallel operation up to 6 unit (only with battery connected))



AC input wires



AC output wires



## Absolute maximum charging voltage ...

Jun 4, 2024 · Multiplus II 48V/5000:  
Absolute maximum charging voltage that can be set? The Multiplus II 48V/5000 datasheet states a maximum charging voltage of 64 volts, and a ...

## Contact Us

For catalog requests, pricing, or partnerships, please visit:  
<https://posecard.eu>