

SolarTech Power Solutions

What inverter to use for a 2 volt battery



Overview

Note! The battery size will be based on running your inverter at its full capacity
Assumptions 1. Modified sine wave inverter efficiency: 85% 2. Pure sine wave inverter efficiency: 90% 3. Lithium Battery: 100%.

What voltage does a 12V inverter use?

So if you use 2, 5, or 10, 12V batteries the voltage would remain at 12V. This is important as your inverter will be designed for a specific input voltage – usually 12V or 24V. For example, if you connect together two 12V 100Ah batteries the voltage remains at 12V but you now have 200Ah of battery capacity.

What voltage does a battery inverter use?

Common battery voltages include 12V, 24V, and 48V, and choosing the correct voltage is essential for compatibility. Voltage Output: This parameter indicates the voltage of the AC power that the inverter produces. Standard household voltage is typically 120V or 240V, depending on your location.

Can you add more batteries to an inverter?

To add more batteries to an inverter you need to check how your equipment is connected. You should assess whether the batteries are wired in series or parallel. If they are wired in series, you won't be able to add more batteries as the voltage will increase rather than the battery capacity.

Can a 12V inverter be connected to a 24v battery?

Let's say you have a 12V inverter and try to connect two 12V batteries in series. You would end up inputting 24V to the inverter and cause an overload. This could cause damage to your equipment, at the very least your inverter will shut down to protect itself.

How do I choose a battery for my inverter?

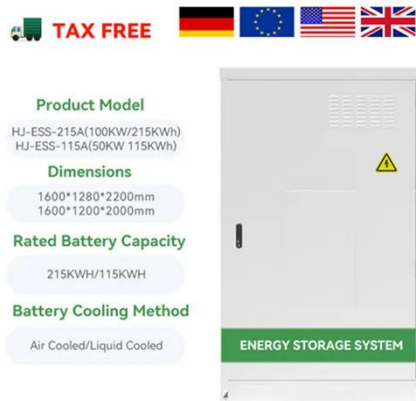
When selecting batteries, it's important to ensure that the chosen battery's rated voltage is compatible with the inverter and matches the system voltage.

Additionally, the depth of discharge is a critical consideration.

What are the different types of battery inverters?

Battery inverters come in various types, each tailored to specific applications and power requirements. Understanding the different types is crucial for choosing the right inverter for your needs: Off-Grid Inverters: These inverters are designed for off-grid systems, providing power independent of the utility grid.

What inverter to use for a 2 volt battery



Calculate Battery Size for Inverter Calculator

Mar 14, 2025 · The Calculate Battery Size for Inverter Calculator helps you determine the optimal battery capacity needed to support your inverter system. By inputting critical parameters such ...

What Size Inverter You Need (Calculations + Battery)

Oct 6, 2022 · Inverters have a power rating in watts (W), which determines how much power they can supply, and the batteries have an amp-hour rating, which measures how much current ...



My 2000W inverter requires 12V; do I connect

...

Dec 18, 2023 · So wiring the batteries together is my main concern. I've read that it's not recommended to wire batteries in parallel, and yet (I think!) I'd need to ...

Can You Attach 2 Inverters to a Battery? Wiring Options for ...

Apr 14, 2025 · Yes, you can connect two inverters to one battery. Each inverter must match the battery's voltage range to work correctly. The battery acts as a power source



Matching Solar Inverters with Battery Systems: What You ...

May 20, 2025 · In this in-depth guide, we break down everything you need to know about matching solar inverters with battery systems. From understanding different inverter types ...

How to Choose the Right Inverter for Lithium Batteries?

Apr 11, 2025 · Answer: To choose the right inverter for lithium batteries, match the inverter's voltage and capacity to your battery's specifications, prioritize pure sine wave inverters for ...





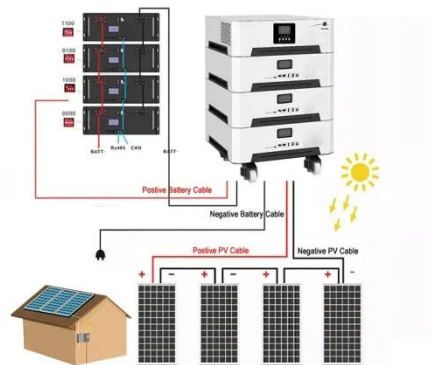
Understanding Battery Capacity and Inverter Compatibility

Aug 20, 2024 · The formula for this conversion is straightforward: Wholesale lithium golf cart batteries with 10-year life? Check here. Watt-Hours (Wh)=Amp-Hours (Ah)×Voltage (V) For a ...

What Size Inverter Can I Run Off a 100Ah Battery? A ...

...

Aug 13, 2024 · Understanding Battery and Inverter Basics Battery Capacity and Inverter Compatibility A 100Ah battery signifies its capacity to deliver 100 ampere-hours of current. This ...

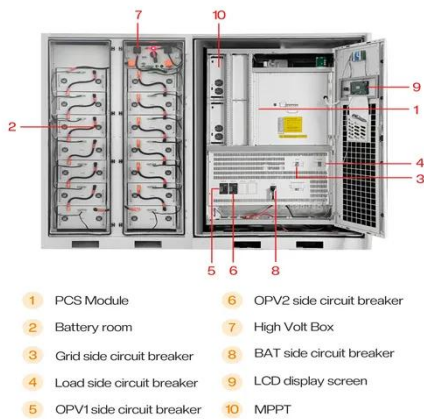


how to use 12V inverter on 24 volt (2 battery) system

Jan 24, 2024 · I have a 12V to 120V Inverter (1800 Watts). So have to go with 24V for 2 PVs to get more power (1300W max I think) - What is the best way to connect it? Straight to a 12 volt ...

10 Tips for Using a Power Inverter Correctly

Jan 24, 2020 · Power inverter that converts DC power to AC power provides a great convenience people's lives, especially in home appliances, such as air conditioner, refrigerator, TV, VCR, ...



What Size Inverter Do I Need for a 200AH Battery?

Dec 15, 2023 · To determine the appropriate inverter size for a 200AH battery, you need to consider the total wattage of the devices you plan to power. A general rule is to choose an ...

How to Safely Connect a Battery to an Inverter: A ...

Apr 13, 2025 · Learn how to safely connect your batteries to your inverter with our guide. Avoid common wiring mistakes to optimize performance and extend ...



Contact Us

For catalog requests, pricing, or partnerships, please visit:

<https://posecard.eu>