

## SolarTech Power Solutions

# Photovoltaic panels can be directly connected to inverters



## Overview

---

Why should I connect my solar panel to an inverter?

Connecting your solar panel to an inverter is important in harnessing solar energy for daily use. An inverter transforms the direct current (DC) electricity produced by the PV solar panels into alternating current (AC) electricity (the standard form used by most home appliances).

Can you connect PV panels to an inverter?

The use of photovoltaic (PV) panels, which convert sunlight into power, has seen exponential growth in recent years. An inverter is a crucial part of every solar power system because it transforms solar energy into usable electricity. So, let's explore the intricacies of connecting PV panels to an inverter.

Can a 12V inverter be directly connected to a solar panel?

Yes, a 12V inverter can be directly connected to a solar panel. However, the direct connection is not commonly recommended because solar panels do not provide a stable voltage output. To ensure a stable power supply, it's advantageous to use a charge controller between the PV solar panel and the inverter.

Does a solar panel send current to an inverter?

However, a solar panel does not send current to an inverter. An inverter pulls the current it needs from the solar panel. If the solar panel is 10kilowatts and your inverter needs 5killowatts, the inverter will only pull 5kilowatts from the solar panels. If you have more space on your rooftop to add more panels, then you should add them.

How do I connect my solar panels to an inverter?

The first step in connecting your solar panels to an inverter is thorough planning and preparation. Assess your energy needs, identify an optimal location for both solar panels and the inverter (with access to direct sunlight

and proximity to the electrical panel), and obtain any permits or approvals required by local authorities.

What are PV panels & inverters?

Understanding the functions of PV panels and inverters is essential before installation. For converting sunlight into direct current (DC) power devices known as Solar panels, or PV panels are used. Inverters are essential because they transform the DC power produced by the PV panels into the alternating current (AC).

## Photovoltaic panels can be directly connected to inverters

---



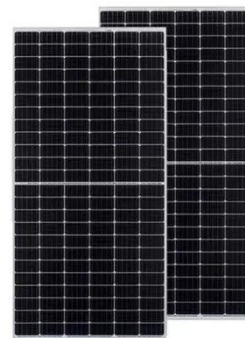
### Can solar panels generate electricity directly connected to an ...

Feb 15, 2025 · The power generated by solar panels can be directly connected to an inverter, which is one of the common configuration methods of solar photovoltaic systems. A solar ...

## How the Grid-Tied Photovoltaic System Works

...

Sep 11, 2022 · It is important to mention that the system is always connected to the grid but the grid supplies in parallel with the inverter/solar panels the ...



### Off-grid photovoltaic panels directly connected to inverter

Jan 13, 2023 · An off-grid photovoltaic system, also known as a standalone photovoltaic system, is a solar power generating system that functions independently of the main electrical grid. It is ...

---

## How To Connect Solar Panels to an Inverter

Microinverters As you can probably guess from the name, microinverters are small inverters that connect directly to each photovoltaic module. Instead of converting the combined output of a ...



---

## Grounding and Methods of Earthing in PV Solar ...

3 days ago · Instead, the frames of the PV panels, battery, and charger can be directly connected to the chassis of the vehicle. An additional grounding wire ...

---

## Can the inverter be directly connected to the ...

Can solar panels be directly connected to the inverter? Yes, solar panels can be directly connected to the inverter instead of the charge controller. A proper and good quality solar ...



---

## How to connect a solar panel to an existing ...



Nov 25, 2023 · If the inverter is designed for direct solar input (as in hybrid or grid-tie inverters), you can connect the solar panel directly to the inverter, provided ...

---

## How to Connect Solar Panels Directly to an Inverter

Solar panels can be plugged directly into an inverter input. In a grid tied system, the solar panels and inverter do not need a battery because power can be transmitted and sent to the grid. ...



---

## Can photovoltaic panels be directly used with inverters



Can a 12V inverter be directly connected to a solar panel? Yes, a 12V inverter can be directly connected to a solar panel. However, the direct connection is not commonly recommended ...

---

## How to Wire Solar Panels to Inverter: Complete

## Guide

Mar 8, 2024 · PV panels generate DC power and an inverter changes that into usable AC electricity. In this guide, we will discuss how to wire solar panels to an inverter in simple steps. ...



### The Complete Guide to Solar Inverters

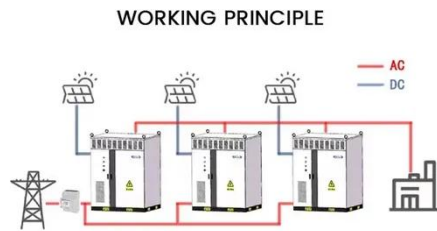
String inverters are the oldest and most common type of solar inverters for small systems in the 500-watt to 3kW range. They are often used in portable and residential applications. The ...

### Can I connect an inverter directly to a solar panel

May 27, 2025 · Direct Connection: It is technically possible to connect an inverter directly to a solar panel, but it is not recommended without proper system ...



### Can A Solar Panel Be Connected Directly To An Inverter?



What Is The Maximum Number Of Solar Panels That Can Be Connected To An Inverter? The maximum number of solar panels connected to an inverter depends on its wattage rating, ...

---

## How to Connect Solar Panels Directly to an Inverter

You can connect a solar panel directly to an inverter and run your appliances. Solar panels can be plugged directly into an inverter input. In a grid tied system, the solar panels and inverter do ...



---

## Contact Us

For catalog requests, pricing, or partnerships, please visit:  
<https://posecard.eu>