

SolarTech Power Solutions

Main communication equipment of base station



Efficient Higher Revenue

- Max. Efficiency 97.5%
- Max. PV Input Voltage 600V
- 150% Peak Output Power
- 2 MPP Trackers, 150% DC Input Oversizing
- Max. PV Input Current 16A, Compatible with High Power Modules



Intelligent Simple O&M

- IP66 Protection Degree: support outdoor installation
- Smart I-V Curve Diagnosis Function: locate PV string faults accurately and automatically detect faults
- DC & AC Type II SPD: prevent lightning damage
- Battery Reverse Connection Protection



Flexible Abundant Configuration

- Plug & Play, EPS Switching Under 10ms
- Compatible with Lead-acid and Lithium Batteries
- Max. 6 units Inverters Parallel
- AFCI Function (Optional): when an arc-fault is detected the inverter immediately stops operation

Overview

What is a base station in telecommunications?

In telecommunications, a base station is a fixed transceiver that is the main communication point for one or more wireless mobile client devices. A base station serves as a central connection point for a wireless device to communicate.

What does a base station do?

Base stations are responsible for transmitting and receiving data to and from wireless devices, as well as managing network resources and ensuring reliable and efficient communication. The basic function of a base station is to convert wireless signals into digital signals that can be transmitted over a wired network infrastructure.

What is a base station in a wireless network?

At the heart of wireless communication networks are base stations, which act as the gateway between wireless devices and the network infrastructure. Base stations are responsible for transmitting and receiving data to and from wireless devices, as well as managing network resources and ensuring reliable and efficient communication.

How does a wireless device communicate with a base station?

When a wireless device, such as a mobile phone, communicates with a base station, the device sends a signal to the base station, which converts the signal into digital form and sends it to the network. Similarly, when the network sends data to the device, the base station converts the digital data into a wireless signal that the device can receive.

How does a base station communicate with a client device?

Generally, if client devices wanted to communicate to each other, they would communicate both directly with the base station and do so by routing all

traffic through it for transmission to another device. Base stations in cellular telephone networks are more commonly referred to as cell towers.

Is a base station a transmitter or broadcast point?

Base stations are generally a transceiver, capable of sending and receiving wireless signals; otherwise, if they only transmitted signals out, they would be considered a transmitter or broadcast point. A base station will have one or more radio frequency (RF) antennas to transmit and receive RF signals to other devices.

Main communication equipment of base station

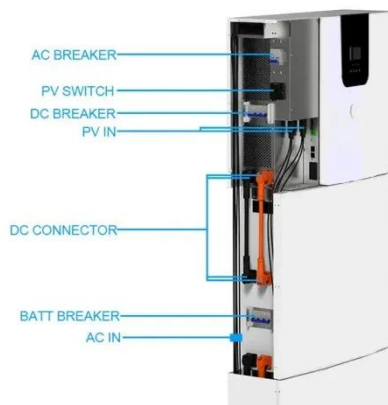


IoT Glossary: Base Station Controller Explained

May 11, 2022 · The base station is responsible for maintaining communication between the network and the users, and also among users. The equipment works with a mobile switching ...

HUAWEI DBS3900 Dual-Mode Base Station Hardware ...

Mar 26, 2022 · DBS3900 Dual-Mode Base Station is the fourth generation base station developed by Huawei. It features a multi-mode modular design and supports three working modes: GSM ...



Post-earthquake functional state assessment of communication base

Dec 1, 2024 · Highlights o A method to evaluate the post-earthquake functionality of communication base stations using Bayesian network is developed. o The dependence ...

Types of radio communication equipment , AEROTHAI ...

The Air-to Ground radio system consists of the following components: 1. The Air-to-ground Base Station (A/G base station) is used for air-to-ground communications within a radius of 200 ...



Post-earthquake functional state assessment of communication base

Dec 1, 2024 · The method considers the dependence between the equipment and its hosting building structure, and the impact of power outages. This model produces seismic functional ...

Radio Base Stations for Secure Communication

In the world of radio communications, a radio base station plays a vital role in ensuring reliable and seamless communication across a wide area. Whether used in mobile networks, ...



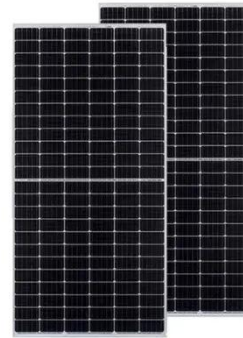


What Is Base Station Subsystem

Dec 14, 2023 · Wireless communications have become an indispensable part of our daily lives, and the base station subsystem that silently supports the communication network plays an ...

What Is the Role of a Base Station in Wireless Communication?

Jun 27, 2025 · Base stations are the backbone of wireless communication networks, playing a pivotal role in signal transmission, network reliability, and high-speed data connectivity. As ...



What Is A Base Station?

Apr 22, 2024 · A base station is a piece of equipment that facilitates wireless communication between devices and a network. It contains the necessary hardware and software to transmit ...

Contact Us

For catalog requests, pricing, or partnerships, please visit:

<https://posecard.eu>