

SolarTech Power Solutions

Is it okay to add an outdoor power supply to the car



Overview

Can you use a power inverter while driving?

Yes, you can certainly use a power inverter in the car while driving to power your devices. Regardless of the watt rating of your inverter, your car can only supply an average of 150 total watts from its 12-volt accessory port (cigarette lighter socket). Exceeding 150 watts will likely blow a fuse or damage devices.

Are all car adapter power setups the same?

Not all car adapter power setups are created equal. The way you connect your car power inverter matters. Smaller inverters, typically under 150 watts, can usually plug directly into your car's cigarette lighter socket. These are ideal for phone chargers, tablets, and small laptops.

Why should you install an outdoor electric vehicle charger?

They can improve their driving experience, save money, and help the environment. Installing an outdoor electric vehicle (EV) charger requires top safety priority. Weatherproofing, electrical safety certifications, and professional installation are key. They ensure a safe and reliable home EV charging setup.

Should you install an outdoor EV charger?

Outdoor EV charger installations are now more common. They let you charge your vehicle at home, no matter where you park. This process needs careful thought for safety, following rules, and lasting performance. In this detailed guide, we'll cover everything about installing an outdoor EV charger. It will meet your needs and make driving better.

How do you charge an outdoor electric vehicle?

Run the electrical wiring from your main panel to the charger spot, using the right cable size. Mount the outdoor electric vehicle charger securely, attaching

it to a stud or strong support. Connect the charger to the power supply, making sure it's grounded and bonded for safety.

How much power does an outdoor EV charger need?

Outdoor EV chargers need different powers, with Level 2 chargers ranging from 16 amps to 80 amps. Higher amperage means faster charging. But, your home's electrical system must support the charger's power demand. You might need to upgrade your electrical panel for some chargers.

Is it okay to add an outdoor power supply to the car



How to charge outdoor power supply with solar energy

Feb 22, 2024 · To charge an outdoor power supply using solar energy, it is essential to understand the fundamental components and processes involved in solar power generation. ...

Inverter for Car: Everything You Need to Know Before You ...

Jun 17, 2025 · Whether you're camping in the wild, working remotely from your vehicle, or preparing for emergencies, having a reliable car power inverter can make a world of ...



can i power a device with more output amperage than the ...

Oct 9, 2019 · Voltage is pushed to the device from the power supply, so an excessive voltage can easily damage the device. Current is pulled from the supply by the device, so the device only ...

Everything You Need to Know About Installing ...

Apr 28, 2025 · To safely use electrical equipment outside, it's advisable to have a dedicated external power point rather than a trailing extension lead from inside ...



114KWh ESS



ISO 9001 ISO 14001 PICC RoHS CE MSDS UN38.3 UK IEC

Can I Charge a Battery Directly from Power Supply?

Nov 3, 2022 · A power supply can charge a battery directly if the voltage and current output of the power supply is greater than or equal to the voltage and ...

Is it practical to carry an outdoor power supply during a self ...

May 30, 2023 · The outdoor power supply can provide campers with reliable power support, prolong the use time of equipment, and ensure the efficiency and safety of camping. At the ...





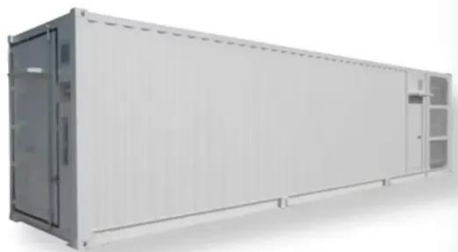
Is It Okay to Use a Power Inverter in a Car - ...

Jul 13, 2023 · Car Battery and Alternator Capacity Before using a power inverter for car, it's crucial to understand your car's electrical system's capacity. The ...

Power Up Your Ride: Exploring the Pros and ...

Oct 9, 2023 · Installing an electric car charger outside can be a game-changer for freeing up indoor space and enjoying the benefits of electric vehicles (EVs). ...

Test certification
CE FC U



Can I use a power inverter in the car when I'm driving?

Jul 14, 2025 · Yes, you can charge a portable power station with your car--but there's a right way and a wrong way to do it. Imagine you're on a remote camping trip, and your power station ...

Is it okay to use a power supply that provides ...

Jul 16, 2025 · First off, that symbol on

the laptop pwr adaptor simply means that its output is DC current (as opposed to AC mains power). Now, for usage, the

...



Contact Us

For catalog requests, pricing, or partnerships, please visit:
<https://posecard.eu>