

SolarTech Power Solutions

How to deal with the grounding of the battery cabinet shelf



How to deal with the grounding of the battery cabinet shelf



4 Keys to a Properly Grounded Battery in the Trunk

Sep 18, 2021 · When I was restoring and improving the performance of one of my classic cars, I came across the idea that my car battery could be moved from ...

DC battery cabinet grounding requirements and standards

Note: All cabinet systems require grounding. 5.4 Environmental Conditions
The cabinet configuration nomenclature refers to "X wide" x "Y high", this is the number of battery jars per ...

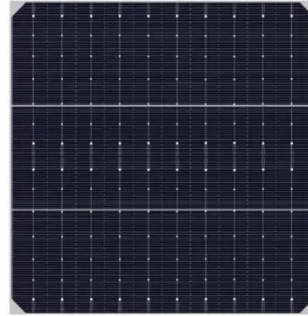


USER MANUAL BATTERY CABINET

Jun 26, 2025 · 5.1 PRODUCT DESCRIPTION The EG4® Welded Indoor Cabinet is a great addition to a new or expanding Energy Storage System (ESS). Made of high-quality steel with ...

Why can't the battery cabinet be grounded

Does a battery cabinet need a grounding electrode? Article 250.162, Direct-Current Circuits and Systems to be Grounded, applies to systems operating at greater than 60 V but not greater ...



Do battery racks need to be grounded?

May 3, 2025 · Yes, battery racks require proper grounding to ensure electrical safety and system stability. Grounding mitigates shock risks and stabilizes voltage levels, but improper ...

importance of earthing a rack battery and its cabinet

Jan 16, 2023 · The batteries are bolted to the rack, with 4 bolts each. This should be good enough for bonding everything together (you can verify this with a meter). The bond wire going from ...



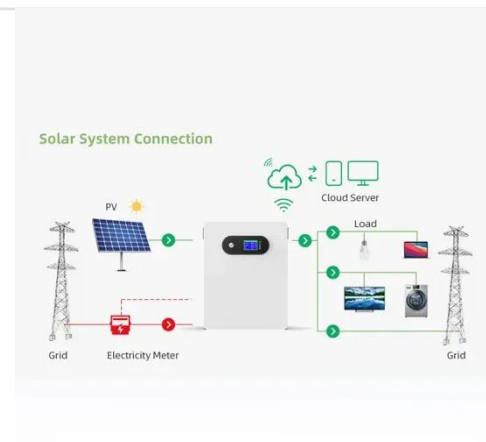
How to Properly Ground a Car Battery



Apr 4, 2025 · To properly ground a car battery, you need to securely connect the negative terminal to a clean, unpainted metal surface on the vehicle's chassis. Many car owners ...

Earthing the battery cabinet

Jun 13, 2025 · Earth the battery management system during installation. Connect the supplied grounding cable to the battery cabinet grounding point (hexagon socket, AF13, torque: 8 Nm).



Why Should Battery Racks Be Grounded? Safety and ...

Jun 15, 2025 · Battery racks should be grounded to prevent electrical hazards, reduce fire risks, and ensure compliance with safety standards like NEC Article 480 and NFPA 70. Grounding ...

Why can't the battery cabinet be grounded

Grounding - Ensure that all batteries are installed in the EG4 battery rack using the mounting hardware provided. Connect a grounding conductor to the grounding lug (or screw) on the rack ...



Server Rack Grounding , How To, Requirements, ...

Mar 24, 2022 · Server rack grounding is important. Learn if you should ground your server rack, get server rack grounding requirements, & discover how to ...

Key Considerations for Installing a Lithium Battery Cabinet

Installing a lithium battery cabinet like Pytes' V - BOX - OC needs attention to various factors. Space, environment, accessibility, security, foundation, electricals, and ventilation are crucial ...



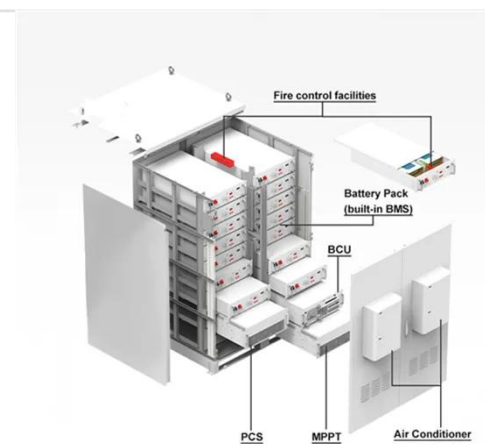
What is the grounding resistance of the energy ...



Mar 23, 2024 · Grounding resistance refers to the ability of an electrical system to safely dissipate fault currents into the ground, 2. Adequate grounding ...

New Energy Battery Cabinet Grounding

For exterior cabinet grounding, locate the safety cabinet's ground screw just below the green dot on the right hand side of the cabinet. Use a 5/16" (8 mm) wrench or nut driver to loosen screw.



Microsoft Word

Nov 15, 2017 · The battery cabinet is equipped with narrow pallet jack or forklift access openings in the front and rear of the cabinet. Move the equipment into the desired location and set in place.

Installing a Battery Grounding Failure Detector

Jun 12, 2025 · Mount the battery grounding failure detector onto the

bracket and reinstall the bracket in the cabinet. Figure 3-43 Installing a battery grounding failure detector



7 grounding, 8 remote battery cabinets/racks, 9 battery ...

The battery cabinets have ground studs. Use an equipment-grounding conductor to connect the lugs of the cabinets together and to connect the cabinets to the ground bus bar in the UPS ...

How to replace the damaged parts of a Grounding Resistance Cabinet?

Aug 13, 2025 · A grounding resistance cabinet is an essential electrical device used to measure and control the grounding resistance of electrical systems. It plays a vital role in ensuring the ...

Outdoor Cabinet BESS

50 kWh/500 kWh Battery Storage System

Industrial and Commercial Energy Storage





All in One
Integrating battery packs



Intelligent Integration
Integrated photovoltaic storage cabinet



High-capacity
50-500kWh



Rated AC Power
50-100kW



Degree of Protection
IP54



Altitude
3000m(>3000m derating)



Operating Temperature Range
-20~60°C (Derating above 50 °C)



48V 100Ah

How To Ground Car Battery Safely And Quickly: The Ultimate ...

Jun 2, 2024 · Grounding a car battery is a crucial step in maintaining its proper functioning and ensuring the safety of your vehicle. By connecting the battery's negative terminal to the ...

OSHA Guidelines: Do Flammable Cabinets Need to be ...

Sep 4, 2023 · What To Know Grounding refers to the use of a low-impedance path to the earth, which can provide a safe outlet for electricity in the event of a short circuit or other electrical ...



What is the grounding resistance of the energy ...

Mar 23, 2024 · Understanding the grounding resistance of an energy storage cabinet is essential for ensuring the safety and efficiency of electrical systems ...

UBC80 Battery Cabinet Installation, Operation,

Feb 3, 2025 · Review the battery system schematic that is located attached to the inside of a cabinet door to determine the number of batteries that need to be installed in the cabinet, the ...



Battery Cabinet Working Space Front Aisle Floor Loading ...

Ensure the technique and hardware used in securing the battery cabinet can support the. Direct-current ground-fault detection. Not all battery systems have DC ground-fault detection but ...

Why Should Battery Racks Be Grounded? Safety and

...

Jun 15, 2025 · Battery racks are grounded using copper conductors bonded to the rack structure and connected to a grounding electrode system. Techniques include: 1. Direct bonding to ...



Grounding Requirements



Inside the Cabinet

At least one ground terminal at the front door, rear door, and side panel of the cabinet should be properly connected to the ground terminal of the cabinet. At least one ground terminal at the ...

Contact Us

For catalog requests, pricing, or partnerships, please visit:
<https://posecard.eu>