

SolarTech Power Solutions

How to connect outdoor fiber optic repeater base station



Display screen
Linux operation system
quad-core processors
smooth and stable system



Overview

How to connect outdoor Olt to a fiber distribution network?

Fiber Optic Connectivity: Install fiber optic cables to connect the outdoor OLT to the fiber distribution network. Proper cable management techniques should be employed to minimize signal loss and maintain cable integrity. 5.

How do I install a fiber optic repeater?

Fiber Optic Repeater models are available for installation into a standard 19-inch rack. Your choice of mounting method should provide access to the Repeater for observing its status indicators. You should also locate the unit for easy access to its rear panel connectors, for ease of installation and future servicing.

How does a fiber optic repeater work?

The fiber optic cable is connected to the fiber optic ports by a low-loss, industrial ST-type connector. All of the repeaters are passive, meaning there is no regeneration of the received signal in the repeater, and no additional delay to the signal produced by the repeater.

What are the characteristics of optical fiber repeaters?

Fiber optic repeaters transmit through optical fibers, while wireless repeaters Spread through space. Therefore, the optical fiber repeater has the following characteristics: ①The frequency of the output signal is the same as that of the input signal, and the channel is transparent.

What is a nwfr85d200 repeater?

The Repeater contains one Fiber Optic Transceiver and one electrical interface for Modbus Plus. Models 490NRP254 and NWFR85D200 provide Fiber Optic Bus and electrical Line-Drop links between Modbus Plus nodes or network segments. Each Repeater contains two Fiber Optic Transceivers and one electrical Modbus Plus interface.

How many dB does a fiber optic repeater lose?

The distance between the two Repeaters is limited by the maximum allowable power loss from end to end. Power loss includes the fiber optic cable attenuation, connector losses at the Fiber Optic Receiver and Transmitter ports, and the system margin of 3 dB.

How to connect outdoor fiber optic repeater base station

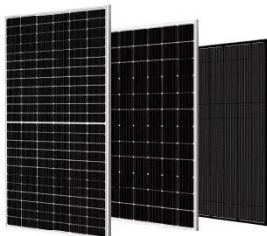


Install Outdoor PoE Switch with Fiber Optical Cable

Jul 30, 2020 · To solve this problem, PoE Switch with fiber optic feature is one of the practical solutions. Its connection between the main control room and PoE ...

Fiber Optic Repeater Station Solutions

Currently, most solutions involve building or relocating new base stations, which greatly increase operators' investment costs. A 5G high-power repeater station can effectively solve these ...



Fiber-To-The-Antenna (FTTA) -- EITC

Aug 15, 2009 · Fiber-to-the-Antenna (FTTA) is a broadband network architecture in which optical fiber is used to connect the remote radio head (RRH) to the base station in new antennas, or ...

Setting up the FRITZ!Repeater for use with a fibre optic ...

1 Connecting the FRITZ!Repeater with the fibre optic modem Insert one end of a network cable into the LAN socket on the FRITZ!Repeater power adapter and the other end into the LAN ...



Modicon Fiber Optic Repeaters User's Guide

Oct 12, 2020 · The Repeater contains one Fiber Optic Transceiver and one electrical interface for Modbus Plus. Models 490NRP254 and NWFR85D200 provide Fiber Optic Bus and electrical ...

GPS/GNSS Optical Repeater Solutions

Aug 5, 2025 · The Repeater solution consists of an active outdoor receive antenna, an outdoor rated transmit unit and a compact repeater unit with adjustable RF gain, and indoor ceiling ...



Use fiber optic repeater to optimize the CDMA mobile



...

Dec 3, 2021 · In the uplink path, the mobile phone signals of the mobile stations in the coverage area are processed by the uplink amplification link and transmitted to the corresponding base ...

Understanding Cell Phone Boosters for Rural ...

Aug 4, 2025 · In a fiber optic repeater system, the receiving end of the cell signal from the base station is called the near-end unit, and the amplifying end at the ...



Proforma Invoice No

Feb 22, 2017 · The EMTS Fiber optic repeating system is a cost-effective and practical solution for extending signal coverage in subways, tunnels and Indoor or outdoor distribution systems.

How to Get Internet to a Shed, Garage, or Barn (2025)

Oct 2, 2024 · The simplest way to

connect to buildings wirelessly is via a Wi-Fi repeater (range extender). A Wi-Fi repeater connects to your Wi-Fi devices and a Wi-Fi router in your home ...



Contact Us

For catalog requests, pricing, or partnerships, please visit:
<https://posecard.eu>