

## SolarTech Power Solutions

# How to connect 4g outdoor base station to wireless network



## Overview

---

What is a 4G base station?

This type of device allows to receive and send signals with a frequency ranging from 70 MHz to 6 GHz, a range that is good for 4G networks, since they typically require between 450 MHz and 3.8 GHz. This device is also full-duplex, and this is why we can easily use it to act as a base station in a 4G network.

How does 4G LTE home internet work?

Using a 4G LTE home internet service isn't quite the same as running a hot spot though. Instead of having everything come through your phone, you set up a router to speak directly to the 4G LTE network, and then that router converts the signal into the conventional Wi-Fi that we all know and love.

What is a 5G base station called?

So, for example, the base station for 5G networks is called gNodeB instead of eNodeB, although conceptually it refers to the same component of the network. It sort of makes sense to have different names, since the technical specs are different. Still, the jargon is really heavy.

How does 4G work?

All these stations, taken together, form a particular radio access network, which in 4G is called the E-UTRAN. Whenever a user equipment goes out of the range of one base station, it can hopefully find another base station in order to keep the connection it has established with the core network.

Do you need a 2G base station?

As such, grab your Faraday cages and lead-lined fridges, and make sure that you don't cause any illegal interference if you do end up exploring this path. We've generally seen 2G base stations over the years, but with the sunset of 2G, those have only been useful in an increasingly low number of countries,

and, every once in a while, a hacker camp.

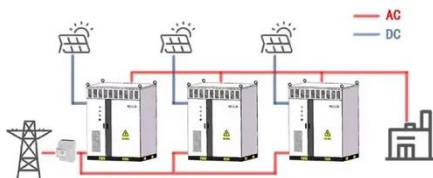
What is the difference between UE & base station in 5G?

The basic building blocks remain still the UE, the base station and the core network, but in 5G the core network is much more complex and offers advanced services such as 5G network slicing. At the same time, the UE and the base station have also changed to offer even greater speeds and reliability.

## How to connect 4g outdoor base station to wireless network

---

WORKING PRINCIPLE



### Allow Access to WiFi settings for Wyze Outdoor Base Station

Aug 18, 2020 · Seems that it defaults to Channel 11. This overlaps with my smart home setup (Smarththings) Zigbee network, which is not modifiable. It would be helpful if Wyze would ...

### Impossible to connect base station to home Wifi

Feb 23, 2024 · I remember wasting many hours trying to connect the base station to home wifi network when I first got the cameras. Now I am having same issue with not being able to ...



### Unity(TM) 4G Outdoor Integrated Base Station

Oct 22, 2024 · This eNB provides users with high-speed broadband wireless access to the Internet using 2x40W output power (2x2 MIMO with 40W output each channel). This eNodeB ...

## How to Connect Arlo Base Station to Wifi: A Step ...

Mar 21, 2024 · To connect your Arlo base station to wifi, launch the Arlo Secure App, tap on your Arlo device, select the Wi-Fi network, and tap on "Change ...

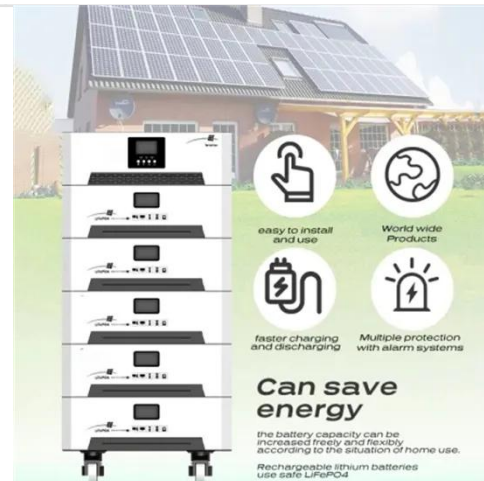


## Wyze Outdoor Cam wifi network change

Feb 15, 2021 · I've been trying to set up the base station & Wyze Cam Outdoor v2 on WiFi. If I click "Change Connection" (default is Ethernet), a pop-up states "Simply unplug the base ...

## 4G/5G HAT Raspberry Pi OpenWrt Tutorial

Apr 22, 2025 · This tutorial will introduce how to use Raspberry Pi 4B with the SIM8202G-M2 HAT module to achieve mobile network Wi-Fi sharing. If an additional UPS is added as a power ...



## 5G base station architecture, Part 1: Evolution

## Applications

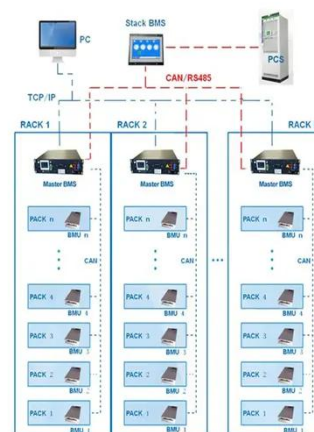


May 16, 2015 · By late 2014 they had built an additional 720,000 4G base stations which no doubt puts a further strain on the power budget. There is continuous ...

## 4G/5G HAT Raspberry Pi OpenWrt Tutorial

Apr 22, 2025 · Introduction This tutorial will introduce how to use Raspberry Pi 4B with the SIM8202G-M2 HAT module to achieve mobile network Wi-Fi sharing. If an additional UPS is ...

BMS Wiring Diagram



## How to Build your Own Personal 4G Network

Jul 29, 2025 · As for the structure of this blog post, I will first introduce the core architecture of a 4G network, then I'll describe all the hardware and software ...

## Can't Connect Base Station to Wi-Fi During Setup

COX and Xfinity default their network

security settings to the WPA3 protocol. To connect the Base Station to Wi-Fi or install the SimpliSafe® cameras, you'll need to temporarily change this to ...



## How to Connect to a Device that Insists on a 2.4 ...

Dec 22, 2023 · You will run into issues with certain devices that insist on your phone or tablet being connected to the 2.4 GHz band in order to attach a new ...

## Emerald Cellular Product Range (4G & 5G LTE)

Jan 24, 2025 · 4G & 5G LTE networks using CableFree Emerald 4G & 5G LTE SDR Small Cell base stations enjoy great flexibility, high performance as well as very low cost of operation and ...



## Emerald Cellular Product Range (4G & 5G LTE)

Jan 24, 2025 · "Stand Alone" operation is possible which enables the 4G/5G Base





station to connect remote terminals without need for external network elements.. This is ideal for closed ...

## Confusion about 2.4g/5g wifi for outdoor wireless cameras

Oct 30, 2020 · Greetings! In a nutshell, I'm ultimately wanting to install 4 outdoor wireless cameras AND be able to operate my smartphone in 5g once installation is complete. I own a ...



## Cellular Module Installation (Gen 3 SimpliSafe®)

The Base Station will attempt to connect to the network and the Keypad will notify you of the result. If unsuccessful, you will be asked to verify your password by re-entering it.

## How do I change the Wi-Fi network that my Arlo device is ...



Jul 7, 2025 · Before you start: Your mobile device must be connected to the same 2.4GHz Wi-Fi network that you are attempting to connect your Arlo device. Your Arlo device must be in ...



---

## Contact Us

For catalog requests, pricing, or partnerships, please visit:  
<https://posecard.eu>