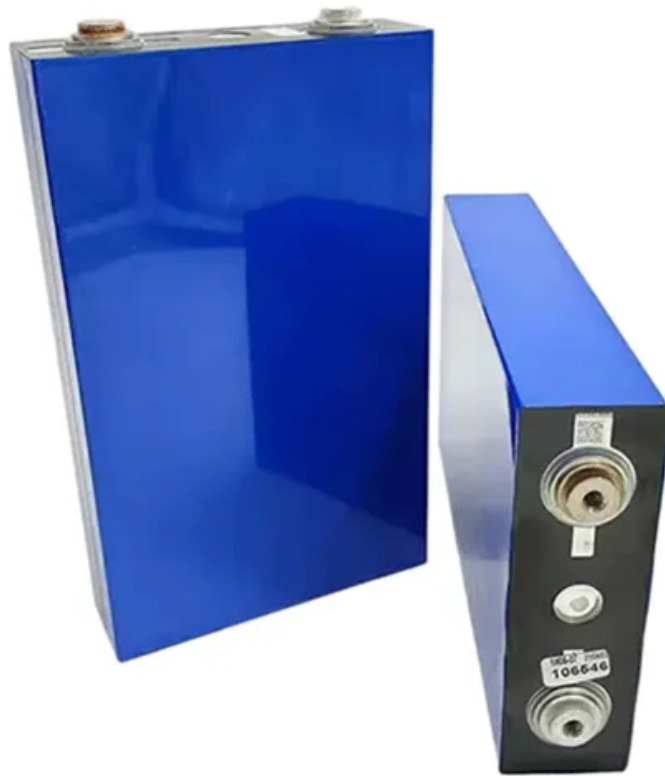


SolarTech Power Solutions

How do communication base stations communicate with each other



Overview

Mobile and base stations communicate using radio frequency (RF) or electromagnetic waves. Specific RF frequencies are planned based on regional needs. For example, GSM uses the 900 MHz band. How does a wireless device communicate with a base station?

When a wireless device, such as a mobile phone, communicates with a base station, the device sends a signal to the base station, which converts the signal into digital form and sends it to the network. Similarly, when the network sends data to the device, the base station converts the digital data into a wireless signal that the device can receive.

How do mobile and base stations communicate?

Mobile and base stations communicate using radio frequency (RF) or electromagnetic waves. Specific RF frequencies are planned based on regional needs. For example, GSM uses the 900 MHz band. Two-way communication requires a frequency pair: one for the uplink (mobile to base station) and one for the downlink (base station to mobile).

What does a base station do?

Base stations are responsible for transmitting and receiving data to and from wireless devices, as well as managing network resources and ensuring reliable and efficient communication. The basic function of a base station is to convert wireless signals into digital signals that can be transmitted over a wired network infrastructure.

Why are base stations important in cellular communication?

Base stations are important in the cellular communication as it facilitate seamless communication between mobile devices and the network communication. The demand for efficient data transmission are increased as we are advancing towards new technologies such as 5G and other data intensive applications.

What is a base station in a wireless network?

At the heart of wireless communication networks are base stations, which act as the gateway between wireless devices and the network infrastructure. Base stations are responsible for transmitting and receiving data to and from wireless devices, as well as managing network resources and ensuring reliable and efficient communication.

What is a signal transmission & reception base station?

Signal Transmission and Reception Base stations use antennas mounted on cell towers to send and receive radio signals to and from mobile devices within their coverage area. This communication enables users to make voice calls, send texts, and access data services, connecting them to the wider world.

How do communication base stations communicate with each other



Cellular Networks, Cells, and Base Stations -- EITC

Aug 15, 2009 · This enables a large number of portable transceivers (e.g., mobile phones, tablets and laptops equipped with mobile broadband modems, etc.) to communicate with each other ...

Starlink Network Architecture: User Terminal, Satellite, ...

Nov 20, 2024 · The phased array antennas enable dynamic beam steering, allowing the satellites to communicate with different ground stations and provide seamless coverage.



Base Station's Role in Wireless Communication Networks

Yes, base stations can be used in remote areas to provide wireless communication services. In these areas, deployable solutions like satellite-linked base stations or solar-powered units ...

Space Communications: 7 Things You Need to Know

Oct 6, 2020 · NASA's Space Communications and Navigation (SCaN) program enables this data exchange, whether it's with astronauts aboard the International Space Station, rovers on Mars, ...



Base Stations and Cell Towers: The Pillars of ...

May 16, 2024 · Base stations and cell towers are critical components of cellular communication systems, serving as the infrastructure that supports seamless ...

What Is the Role of a Base Station in Wireless Communication?

Jun 27, 2025 · Base stations are the backbone of wireless communication networks, playing a pivotal role in signal transmission, network reliability, and high-speed data connectivity. As ...



Cisco CCNA - Wirelss BSS &

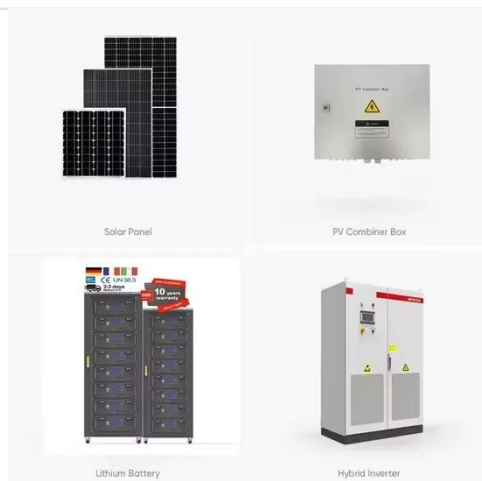


ESS

Basic Service Set (BSS) Wireless LAN is established using a central device called an Access Point that centralizes access and control over a group of wireless devices. All wireless devices ...

Radio telephony basics , IVA0 Documentation Library

Radiotelephony (RTF) provides the means by which pilots and ground personnel communicate with each other. The information and instructions transmitted are of vital importance in the safe ...



What Is A Base Station?

Apr 22, 2024 · Here is a simplified explanation of how a base station works:
1. Signal Reception: The base station receives radio signals from mobile devices within its coverage area. These ...

How Do Smartphones Communicate? Get the

Inside Scoop

Aug 11, 2025 · Each cell tower serves a small number of devices and is connected to a base station that can communicate with other base stations in the area. This allows for a wide ...



How does a base station controller work?

Posted on September 6, 2022 Author
Table of Contents [hide] 1 How does a base station controller work? 2 What is the use of BTS in cellular network architecture? 3 Which control the ...

How Do Base Stations Communicate with Each Other?

Aug 13, 2025 · Base stations communicate with each other through a wireless communication protocol such as Wi-Fi, Bluetooth, LTE, or other cellular networks. They can also communicate ...



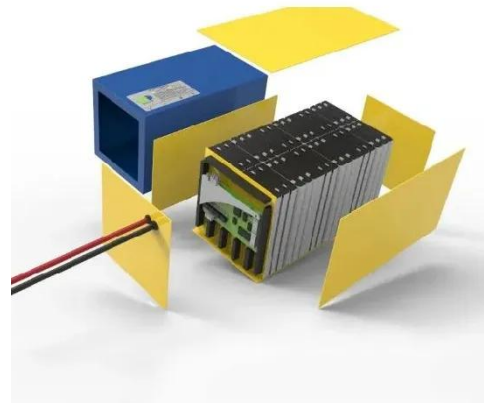
DO Base Stations Need to See Each Other? The



May 15, 2024 · However, the question arises, do base stations really need to see each other for effective communication? As we dig deeper, we will explore the significance of line of sight in ...

Simulation and Classification of Mobile Communication Base ...

Dec 16, 2020 · In recent years, with the rapid deployment of fifth-generation base stations, mobile communication signals are becoming more and more complex. How to identify and classify ...



Contact Us

For catalog requests, pricing, or partnerships, please visit:
<https://posecard.eu>