

SolarTech Power Solutions

How do 5g base stations get power



Overview

How much power does a 5G station use?

The power consumption of a single 5G station is 2.5 to 3.5 times higher than that of a single 4G station. The main factor behind this increase in 5G power consumption is the high power usage of the active antenna unit (AAU). Under a full workload, a single station uses nearly 3700W.

Why does 5G use more power than 4G?

The data here all comes from operators on the front lines, and we can draw the following valuable conclusions: The power consumption of a single 5G station is 2.5 to 3.5 times higher than that of a single 4G station. The main factor behind this increase in 5G power consumption is the high power usage of the active antenna unit (AAU).

What is a 5G base station?

A 5G base station is mainly composed of the baseband unit (BBU) and the AAU — in 4G terms, the AAU is the remote radio unit (RRU) plus antenna. The role of the BBU is to handle baseband digital signal processing, while the AAU converts the baseband digital signal into an analog signal, and then modulates it into a high-frequency radio signal.

Does BS load rate affect the power consumption of 5G networks?

the power consumption of AAU nearly linearly increases with the growth of BS load rate, while that of the BBU is quite stable at varying load rates. As the power consumption of 5G BSs is significantly higher than that of 4G BSs, we focus on the backup power allocation of 5G networks in this work.

How many HD movies can a 5G base station download?

Studies show that with 5G base stations, it is possible to download more than 5,000 HD movies using only 1 kWh, whereas with 4G, the same amount of power would allow for fewer than 200 movies to be downloaded.

How will 5G be used in the future?

Reprinted, with permission, from ref. In the foreseeable future, 5G networks will be deployed rapidly around the world, in cope with the ever-increasing bandwidth demand in mobile network, emerging low-latency mobile services and potential billions of connections to IoT devices at the network edge .

How do 5g base stations get power



Macrocell vs. Small Cell vs. Femtocell: A 5G introduction

Oct 20, 2023 · 5G networks also use macrocells, such as cell towers, for connectivity. These larger base stations enable lower 5G frequencies, compared to small cells' high-frequency ...

What is the Power Consumption of a 5G Base Station?

Nov 15, 2024 · Why is 5G Power Consumption Higher? 1. Increased Data Processing and Complexity These 5G base stations consume about three times the power of the 4G stations. ...



5G base stations use a lot more energy than 4G ...

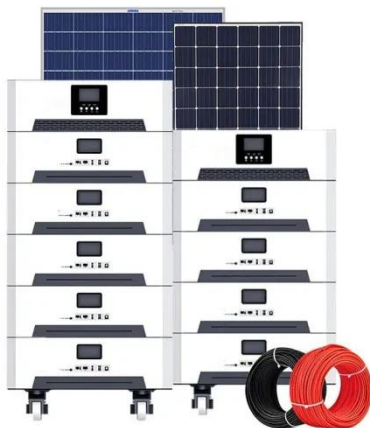
Apr 3, 2020 · Carriers have been looking at energy efficiency for a few years now, but 5G will bring this to top of mind because it's going to use more energy than ...



5G network deployment and the associated energy

...

Jul 1, 2022 · The simulation results show that 700 MHz and 26 GHz will play an important role in 5G deployment in the UK, which allow base stations to meet short-term and long-term data ...



5g base station architecture

Dec 13, 2023 · 5G (fifth generation) base station architecture is designed to provide high-speed, low-latency, and massive connectivity to a wide range of devices. The architecture is more ...

Types of 5G NR Base Stations and Their Roles in

...

May 7, 2025 · As 5G continues to evolve, understanding these base stations will be essential for optimizing network design and achieving the full potential of

...



LPW48V100H
48.0V or 51.2V

Energy Management of

Base Station in 5G and B5G: Revisited



Apr 19, 2024 · Since mmWave base stations (gNodeB) are typically capable of radiating up to 200-400 meters in urban locality. Therefore, high density of these stations is required for ...

Front Line Data Study about 5G Power Consumption

The power consumption of a single 5G station is 2.5 to 3.5 times higher than that of a single 4G station. The main factor behind this increase in 5G power consumption is the high power ...



5G Power: Creating a green grid that slashes ...

Jun 6, 2019 · Base stations with multiple frequencies will be a typical configuration in the 5G era. It's predicted that the proportion of sites with more than five ...

How Much Power Does a 5G Base Station Consume? - Smart ...

On average, a 5G base station consumes between 1,000 to 3,000 watts. This is significantly higher than 4G base stations, which typically consume 500 to 1,500 watts. The power usage ...



Optimal configuration of 5G base station energy storage

Mar 17, 2022 · fits when it meets the basic power backup requirements. Reference [18] analyzed the problems existing in the current power configuration of base stations, and proposed ...

Optimal Backup Power Allocation for 5G Base Stations

Feb 18, 2022 · With considerable power consumption of the 5G BS (2 ~ 3 times of that of a 4G BS, referring to Fig. 4.2 a), a large number of BS deployment means enormous ...



51.2V 150AH, 7.68KWH

Uninterrupted Power for

5G Base Stations: How the 51.2V ...



Apr 14, 2025 · With 5G base stations consuming 3-4 times more energy than their 4G counterparts (GSMA 2023) and millions of new sites deployed annually, traditional power ...

making EIRP Measurements on 5G Base Stations ...

Jan 22, 2020 · New methods of measurement have had to be developed that can be performed on any configuration of base station, however complex. These must go beyond a simple ...



How Much Power Does a 5G Base Station Consume? - Smart ...

The rise of 5G technology brings faster speeds and lower latency, but it also raises questions about its energy consumption. As 5G networks are rolled out across the globe, it is important ...

Power Consumption

Modeling of 5G Multi-Carrier Base ...

Jan 23, 2023 · In this paper, we present a power consumption model for 5G AAUs based on artificial neural networks. We demonstrate that this model achieves good estimation ...



What is the Power Consumption of a 5G Base Station?

Nov 15, 2024 · Compared to its predecessor, 4G, the energy demand from 5G base stations has massively grown owing to new technical requirements needed to support higher data rates ...

How Baseband Boards Contribute to 5G and Beyond ...

Aug 15, 2025 · The transition from 4G to 5G base stations has been driven by significant advancements in hardware and software technologies. 5G base stations incorporate cutting ...



Contact Us

For catalog requests, pricing, or partnerships, please visit:
<https://posecard.eu>