

SolarTech Power Solutions

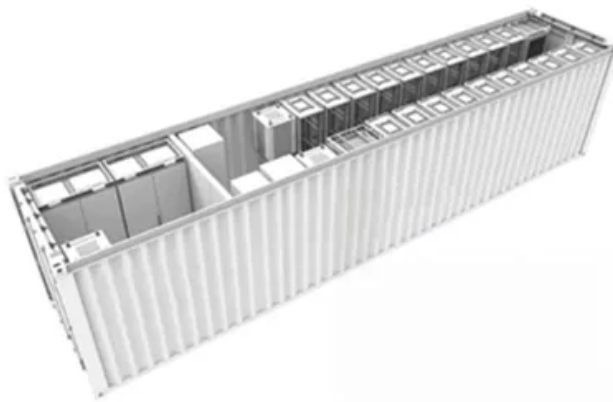
Fix the sine wave inverter setting meter



TAX FREE

1-3MWh

BESS



Overview

How to maintain a pure sine wave inverter?

Pure sine wave inverter during maintenance when the maintenance staff also needs to make sure does not have any other metal objects. As in the maintenance, they might want to reconnect the battery, the presence of metal objects can cause the battery short-circuit, burns the maintenance staff. 3. Prepare professional repair tools.

What happens if a pure sine wave inverter fails?

Cut off the input and output The pure sine wave inverter in the event of failure, to avoid failure to further increase, then it cannot continue to operate and use. Maintenance personnel should immediately cut off the input and output, and the corresponding components one by one investigation to determine the fault location.

Are modified sine wave inverters safe?

Modified sine wave inverters produce a stepped, approximated AC waveform that is suitable for most devices but may cause issues with some sensitive electronics. Pure sine wave inverters output a smooth, sinusoidal waveform that closely mimics utility grid power and is safe for all devices.

How do I troubleshoot an inverter?

To troubleshoot an inverter, follow a systematic approach to identify and resolve common issues. First, check the battery level and connections using a multimeter to ensure the battery voltage meets the inverter's minimum requirement. Inspect the battery terminals for corrosion and clean them if necessary.

What should I do if my inverter doesn't produce power?

If your inverter turns on but doesn't produce any output power, consider these steps: Verify the Load: Ensure that the load connected to the inverter is within

its rated capacity. Overloading the inverter can cause it to shut down or not produce any power. Disconnect all loads, reset the inverter, and reconnect them one at a time.

How do I Reset my inverter?

Resetting the inverter can fix minor errors and glitches. Start with a soft reset by pressing and holding the reset button to clear transient faults. If issues persist, conduct a hard reset by powering down the inverter using the AC/DC switches for 3–5 minutes before restarting. Understanding error codes is crucial for diagnosing specific issues.

Fix the sine wave inverter setting meter

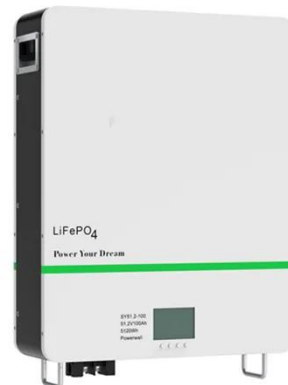


Power Inverter Troubleshooting - Common Problems and How to Fix ...

Sep 24, 2024 · Q: Can I use a power inverter to run sensitive electronic devices, such as computers or medical equipment? A: It is recommended to use a pure sine wave inverter for ...

Sinewave Inverter Circuit Using Arduino

The post explains how to build a simple sinewave inverter circuit using PWM feed from an Arduino Uno board, the article also discusses a sinewave 3 phase inverter using the same input from ...



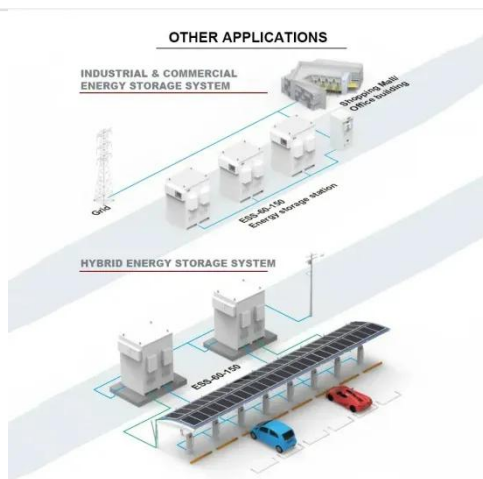
Pure Sine Wave Inverter Troubleshooting Guide (5)

Pure Sine Wave Inverter Troubleshooting Guide (5) If your power inverter has stopped working, we can help. Our troubleshooting guide is packed with useful tips and tricks to help you ...

? What is a Pure Sine Wave Inverter and Why Does it Matter?

Jun 10, 2025 · Electricity that comes from the power grid is in the form of a sine wave--a smooth, repeating wave that maintains a consistent frequency (usually 50 or 60 Hz). A pure sine wave

...



Open Ground when testing outlets on inverter

Dec 26, 2019 · When testing, all my outlets report Open Ground. My inverter is properly grounded to a grounding rod outside, but I believe the reason for the Open Ground, is because inside my ...

Pure Sine Wave Inverters / Troubleshooting : Does Not

...

Aug 17, 2025 · Check DC voltage on the back of the inverter. It must be between 10.5 and 16 volts in order for the inverter to operate correctly. (Use Multi-meter). Check fuse between inverter ...





3 Sine wave inverters repair tips

Apr 16, 2020 · Pure sine wave inverters are sensitive equipment and need professional repairs and services. While you may be able to loosen and tighten a few screws, it's better to have ...

Configuring Magnum Sine Inverter for Lithium Batteries ...

Jan 26, 2024 · We have installed 2x 200ah Renogy Lifepo4 batteries . Our Mangum Sine inverter is a model pre built in lithium profiles. The battery manual states: During the standard charging ...

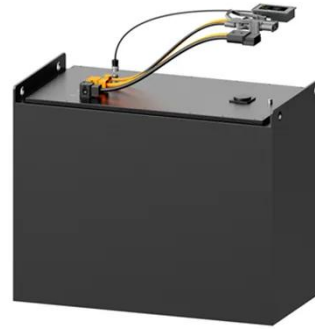


24v Off-Grid Solar Inverter MPPT and 120A charger

Jan 3, 2023 · Bit of a strange one, just to give some background; Purchased this cheap PowMr 4200W 24V Solar Inverter Pure Sine Wave Off-Grid With MPPT 120A Charger from eBay.

Pure sine wave inverter

Jul 8, 2025 · 1 Overview IPower-Plus is a new generation of pure sine wave inverter compatible with the lithium battery system. This new inverter adopts surge current suppression technology ...



Deye Official Store

10 years
warranty

Troubleshoot 12V 2000W/3000W Pure Sine Wave Inverter ...

This document aims to provide users with troubleshooting guidance for common faults on the following: 2000W 12V Pure Sine Wave Inverter Charger w/ LCD Display (SKU: R-INVT-PCL1 ...

How to Reset the Pure Sine Wave Inverter? - Powerinverter

A pure sine wave is a continuous wave that describes a smooth repetitive oscillation. Pure sine wave inverter is one of the power inverters. Conventional AC power is produced by rotating ...



General Inverter Troubleshooting , Magnum



Dimensions

4 days ago · General Inverter Troubleshooting The following is a quick reference for Magnum Energy inverter/charger to diagnose typical symptoms. Always refer to your full user manual.

Troubleshoot 12V 700W/1000W/2000W/3000W Pure Sine Wave Inverters ...

Learn how to troubleshoot common faults with Renogy 12V pure sine wave inverters, including the 700W, 1000W, 2000W, and 3000W models, as well as the new edition models with power ...



Contact Us

For catalog requests, pricing, or partnerships, please visit:
<https://posecard.eu>