

SolarTech Power Solutions

Factory price bus tie breaker in Mexico



Overview

What is a bus tie breaker?

In electrical distribution systems, a bus tie breaker is used to connect two sections of an electrical bus serving different power sources. Bus tie breakers are usually open, keeping the two sections separate. When one power source fails, the tie breaker can be closed to maintain service through the section, avoiding a planned service outage.

What is a tie breaker?

A tie breaker is a type of circuit breaker that connects two sections of an electrical bus serving different power sources. They are commonly used to connect electrical systems to power sources and load circuits, as well as to protect people and equipment from overcurrents.

What is a double breaker bus system?

As the name says, there are two bus bars, bus 1 and bus 2, as we can see in the diagram, each bay or equipment such as a line, or a transformer is connected to both the buses, through breaker and isolators to each bus. This means each bay has two breakers for bus 1 and bus 2, hence this is called a double breaker bus system.

How many buses are there in a transformer?

As shown in the diagram, there are two buses, bus 1 and bus 2. Respective bays are connected to bus 1 and bus 2. Line 1 and transformer 1 are connected to bus 1 through breaker and isolators. Line 2 and transformer 2 are connected to bus 2 through breaker and isolators.

How does a bus circuit breaker work?

When a fault occurs on a bus, the bus section circuit breaker is opened, separating the bus into two sections. This isolation limits the impact of the fault, ensuring that only a portion of the loads loses power while allowing for

continued operation of the unaffected sections.

What is a one and half breaker bus system?

This is an improvised version of a double-breaker bus system. In the previous double breaker bus system, each bay has two breakers, which means four breakers for two bays. Whereas in this system, two bays have a common tie-breaker, which means two bays have a total of three breakers instead of four. Hence called a one and half breaker system.

Factory price bus tie breaker in Mexico



Mexico Bus Routes (2024 Prices) , Bus Jump Mexico

Mexico bus rides - FAQ How much is a bus fare Mexico? Bus fares in Mexico vary based on route, time of day, and passenger discounts. For accurate fare information, refer to Mexico's ...

Understanding Bus Tie Breakers: Functionality ...

Sep 14, 2024 · Bus tie breakers are an essential component of reliable electrical systems, providing flexibility and redundancy in power distribution. They are ...



Bus Tie Circuit Breakers , Products & Suppliers , GlobalSpec

Find Bus Tie Circuit Breakers related suppliers, manufacturers, products and specifications on GlobalSpec - a trusted source of Bus Tie Circuit Breakers information.

bus tie breaker??

[illegible]

Analysis of Advantages and Disadvantages of Closed ...

Oct 25, 2024 · configuration equipment
no 3 operations. requirements breakers
intended closed bus-ties to provide
redundancy breakers reliability of closed
classification for should closed ...

Circuit Breaker for Wiring , MISUMI MEXICO

Circuit Breaker for Wiring for industrial applications. MISUMI offers free CAD downloads, short lead times, competitive pricing, and no minimum order quantity. Purchase Circuit Breaker for ...



Bus Tie Breakers and Switches



Sep 26, 2023 · Bus Tie Breakers and Switches A bus tie breaker or switch goes between two buses rather than between a bus and a piece of equipment. Click the LV Breaker palette ...

Solid-State Bus Tie Breaker Market Research Report 2033

According to our latest research, the global Solid-State Bus Tie Breaker market size in 2024 stands at USD 1.21 billion, driven by the robust adoption of advanced power management ...

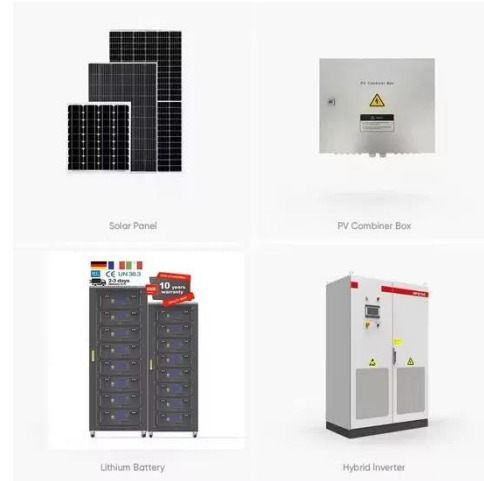


TIE Breaker & Bus Coupler

Apr 27, 2007 · Good Answer: The best description. Bus coupler connects two different buses N O Bus sectionaliser Divides a bus N C Bus tie Ties a bus to another incomer on emergency N O

Deep Sea Electronics DSE8680 Synchronising Generator Bus Tie ...

Description The DSE 8680 is an intelligent control module designed to control a generator bus-tie breaker. The control module features technology that automatically manages the ...



Tie Breaker in Series and Bus duct , Eng-Tips

May 20, 2025 · Breaker at both ends or only one end - if the intent is to keep the two busses always tied / treated as a single bus, there is no need to have circuit breakers. Just one ...

Factory price bus tie breaker in tanzania

Our company primarily engaged and export Factory price bus tie breaker in tanzania. we depend on sturdy technical force and constantly create sophisticated technology to meet the demand ...



Copper Bus Bars , Manufacturers, Exporters, Suppliers In Mexico



Oct 13, 2023 · We are best Manufacturers, Exporters & Stockist of Copper Bus Bars in Mexico. Copper bus bars are demanded because of their superior conductivity and properties like free ...

Bus Tie Breakers and Switches

Sep 26, 2023 · After the tie breaker is connected to buses on both sides, the Rotate command only changes the orientation in the one-line diagram, and the bus remains as a tie breaker.



Mexico , CBI Inc

2 days ago · Our carefully-selected distributors help you find the right circuit breaker for your needs. Find a distributor. Are you an equipment manufacturer in telecoms or construction? If ...

Contact Us

For catalog requests, pricing, or partnerships, please visit:
<https://posecard.eu>