

SolarTech Power Solutions

Earth leakage breaker factory in Melbourne

Voltage range

636V-876V

Rated voltage

768V

Cell type

Lithium iron phosphate



Overview

What are Mitsubishi Electric Earth leakage circuit breakers?

Mitsubishi Electric Earth-Leakage Circuit Breakers. Mitsubishi Electric World Super WS-V Series contains a comprehensive range of earth leakage circuit breakers with rated currents up to 800 A. The circuit breakers are amongst the smallest compact circuit breakers in the world with electronic overload indication.

What is an earth leakage circuit breaker (ELCB)?

The earth leakage circuit breaker (ELCB) is used to protect persons against electric shock hazards and to prevent a fire. This also have the same function as MCCB. Product Catalogue This kind of breaker is ELCB rated 225 Amp and less, and is available to protect a motor and the associated wiring or conductors.

What is the Eaton elq116c3td earth leakage breaker?

The Eaton ELQ116C3TD Earth Leakage Breaker is a single-pole device designed for commercial applications, providing efficient electrical circuit protection. This product uniquely combines an MCB (Miniature Circuit Breaker) and an RCD (Residual Current Device) within a single unit, streamlining protection against overload and short circuits.

What is the difference between overload circuit breaker and earth leakage device?

Whilst overload circuit breakers are designed to protect the power distribution system, earth leakage devices are only useful for protecting people from electrocution. An overload circuit breaker is designed to interrupt a circuit when the current exceeds a preset limit.

What are earth leakage relays?

Earth leakage relays detect ground faults and abnormal leakage currents.

These protective measures ensure circuit integrity, prevent equipment failure, and enhance overall electrical system safety. Air Circuit Breakers (ACBs) serve as the primary protective devices in large switchboards or for directly powering significant equipment.

What are earth leakage protection devices?

Earth leakage protection devices are designed to trip for fault currents between 10 and 100 mA and for interrupt times between 40 and 100 milliseconds after a fault current is sensed.

Earth leakage breaker factory in Melbourne



ZS Earth Leakage Circuit Breaker

Jun 18, 2020 · ZS Earth Leakage Circuit Breaker (Residual Current Device)
Protection against the hazard of earth leakage can be provided by circuit breakers incorporating Earth Leakage ...

Frequently asked questions , Electrical Safety Office

2 days ago · A safety switch will turn off the power in a fraction of a second if a leakage of current to "earth" is detected. This can happen if there is a faulty power point or electrical appliance or ...



Air Circuit Breakers , Mitsubishi Electric Factory

...

Aug 28, 2020 · MITSUBISHI ELECTRIC FA site introduces information of Low Voltage Power Distribution Product in latest information, product information, ...

...

Why earth leakage protection is necessary in low ...

Dec 25, 2019 · When earth fault is too low... We all should know that low voltage circuit breakers and fuses operate in the event of excess current arising from ...



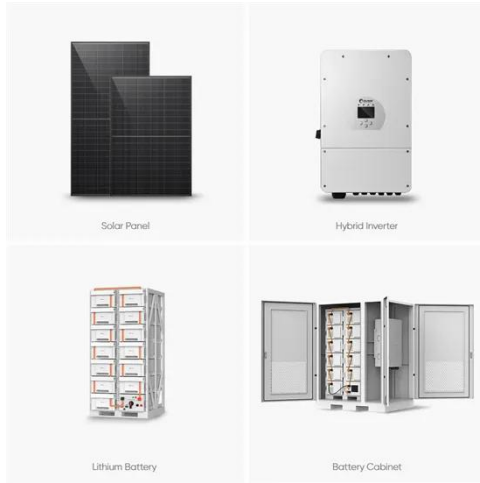
OEM Earth Leakage Breaker Manufacturer and Exporter, Factory ...

May 13, 2025 · Earth Leakage Breaker Manufacturers, Factory, Suppliers From China, We glance forward to receiving your enquires shortly and hope to have the opportunity to function along ...

OEM Earth Leakage Circuit Breaker Manufacturer and Exporter, Factory ...

May 13, 2025 · Earth Leakage Circuit Breaker Manufacturers, Factory, Suppliers From China, If you are interested in any of our products or would like to discuss a customized order, please ...





Ultimate Guide to Earth Leakage Circuit Breakers

...

Aug 19, 2025 · Earth Leakage Circuit Breakers (ELCBs) are electrical devices designed for your safety and protection from potential electric shocks. This ...

Contact Us

For catalog requests, pricing, or partnerships, please visit:
<https://posecard.eu>