

SolarTech Power Solutions

Communication base station communication network



Overview

A base station is an integral component of wireless communication networks, serving as a central point that manages the transmission and reception of signals between cellular networks and mobile devices. What is a base station in a telecommunications network?

A base station is a critical component in a telecommunications network. A fixed transceiver that acts as the central communication hub for one or more wireless mobile client devices. In the context of cellular networks, it facilitates wireless communication between mobile devices and the core network.

How does a wireless device communicate with a base station?

When a wireless device, such as a mobile phone, communicates with a base station, the device sends a signal to the base station, which converts the signal into digital form and sends it to the network. Similarly, when the network sends data to the device, the base station converts the digital data into a wireless signal that the device can receive.

What does a base station do?

Base stations are responsible for transmitting and receiving data to and from wireless devices, as well as managing network resources and ensuring reliable and efficient communication. The basic function of a base station is to convert wireless signals into digital signals that can be transmitted over a wired network infrastructure.

How does a base station communicate with a client device?

Generally, if client devices wanted to communicate to each other, they would communicate both directly with the base station and do so by routing all traffic through it for transmission to another device. Base stations in cellular telephone networks are more commonly referred to as cell towers.

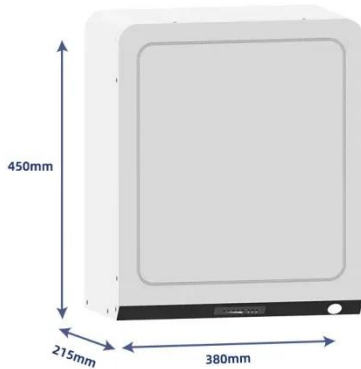
Is a base station a transmitter or broadcast point?

Base stations are generally a transceiver, capable of sending and receiving wireless signals; otherwise, if they only transmitted signals out, they would be considered a transmitter or broadcast point. A base station will have one or more radio frequency (RF) antennas to transmit and receive RF signals to other devices.

Why are base stations important in cellular communication?

Base stations are important in the cellular communication as it facilitate seamless communication between mobile devices and the network communication. The demand for efficient data transmission are increased as we are advancing towards new technologies such as 5G and other data intensive applications.

Communication base station communication network



Reliability prediction and evaluation of communication base stations ...

Jun 2, 2023 · In this paper, we propose a simple logistic method based on two-parameter sets of geology and building structure for the failure prediction of the base stations in post-earthquake.

Simulation and Classification of Mobile Communication Base Station

Dec 16, 2020 · In recent years, with the rapid deployment of fifth-generation base stations, mobile communication signals are becoming more and more complex. How to identify and classify ...



What Is Base Station in Mobile Communication? - The Heart of Networks

Jan 11, 2025 · At the heart of this system lies the base station, a crucial



component that enables seamless communication between mobile devices and the network. In this blog post, we will ...

define base station in communication ,Tronyan Communication Base

define base station in communication ,Tronyan communication base stations ensure reliable, high-performance network connectivity, providing seamless communication for modern ...



Multi-objective cooperative optimization of communication base station

Sep 30, 2024 · Recently, 5G communication base stations have steadily evolved into a key developing load in the distribution network. During the operation process, scientific dispatching ...

Traffic Prediction of Mobile Communication Base Station ...

Aug 14, 2024 · Simultaneously, in the age of big data information, it is possible to obtain real-time feedback of base station traffic data. By acquiring information about traffic changes in mobile ...



Communication Base-Station Antenna Detection Algorithm Based ...

Nov 30, 2019 · Aiming at improving the efficiency and the accuracy of the base station antenna inspection, a new method is proposed to use the deep learning algorithm YOLO v3 algorithm ...

A super base station based centralized network architecture for ...

Apr 1, 2015 · In future 5G mobile communication systems, a number of promising techniques have been proposed to support a three orders of magnitude higher network load compared to what ...



Base Station's Role in Wireless Communication Networks



What is a base station? A base station is a critical component of wireless communication networks. It serves as the central point of a network that connects various devices, such as ...

Wireless Communication Base Station Location Selection ...

Jun 9, 2024 · Abstract: Base station location selection and network optimization are critical to improving the performance of wireless communication networks in terms of latency reduction.

...



Optimizing redeployment of communication base station

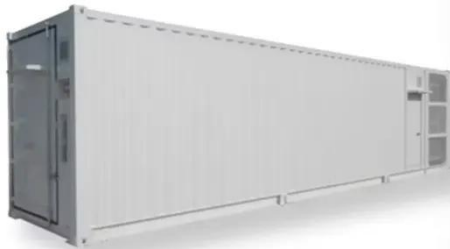
Feb 6, 2025 · Most of the current research is based on the performance of the base station (BS) itself or the operation mode of the communication operator without considering the users'

...



Base Stations and Cell Towers: The Pillars of ...

May 16, 2024 · Base stations and cell towers are critical components of cellular communication systems, serving as the infrastructure that supports seamless ...



Energy-Efficient Base Station Deployment in Heterogeneous Communication

Aug 23, 2019 · With the advent of the 5G era, mobile users have higher requirements for network performance, and the expansion of network coverage has become an inevitable trend. ...

AntennaNet: Antenna Parameters Measuring Network for ...

Feb 16, 2021 · In the field of measuring parameters of mobile communication base station antenna, most of its methods share some deficiencies to a different extent. The traditional ...



Optimised configuration of

multi-energy systems ...



Dec 30, 2024 · Additionally, exploring the integration of communication base stations into the system's flexibility adjustment mechanisms during the configuration is important to address the ...

Contact Us

For catalog requests, pricing, or partnerships, please visit:
<https://posecard.eu>