

SolarTech Power Solutions

Can three battery cabinets be connected in parallel



Overview

The basic concept is that when connecting in parallel, you add the amp hour ratings of the batteries together, but the voltage remains the same. For example: 1. two 6 volt 4.5 Ah batteries wired in parallel are capable of providing 6 volt 9 amp hours (4.5 Ah + 4.5 Ah). 2. four 1.2.

This is the big “no go area”. The battery with the higher voltage will attempt to charge the battery with the lower voltage to create a balance in the circuit. 1.

This is possible and won't cause any major issues, but it is important to note some potential issues: 1. Check your battery chemistries – Sealed Lead Acid batteries.

What happens if you connect 3 batteries in parallel?

When you connect batteries in parallel, like connecting 3 batteries in parallel, you are connecting batteries to ramp up the amp-hour capacity. The connection capacity will increase, but the voltage will not. For instance, connecting four 12-volt 100Ah batteries will provide a 12V 400Ah battery supply.

How to wire multiple batteries in parallel?

To wire multiple batteries in parallel, connect the negative terminal (-) of one battery to the negative terminal (-) of another, and do the same to the positive terminals (+). For example, you can connect four Renogy 12V 200Ah Core Series LiFePO4 Batteries in parallel. In this system, the system voltage and current are calculated as follows:

Can a battery be connected in parallel?

Do not connect batteries with different chemistries, rated capacities, nominal voltages, brands, or models in parallel, series, or series-parallel. This can result in potential damage to the batteries and the connected devices, and can also pose safety risks.

How to wire multiple batteries in series?

To wire multiple batteries in series, connect the negative terminal (-) of one battery to the positive terminal (+) of another, and do the same to the rest. Take Renogy 12V 200Ah Core Series LiFePO4 Battery as an example. You can connect up to 4 such batteries in series. In this system, the system voltage and current are calculated as follows:.

What is a series parallel battery system?

Series-parallel-connected batteries involve connecting more than one battery to increase both the amp-hour capacity of the battery as well as the voltage. Connecting six 6V 100Ah batteries will yield a 24V 200Ah battery system using two strings of four batteries.

Why do I need multiple battery banks in parallel?

There are several reasons to do this. For example, because you want to increase the capacity of an existing battery, or perhaps because the desired cell capacity is not available in one battery package. To increase capacity, multiple cells can be connected in parallel or you can place multiple battery banks in parallel.

Can three battery cabinets be connected in parallel

Parallel UPS systems



Jan 14, 2025 · (Parallel redundant UPS systems are naturally lightly loaded and can be quite inefficient. To improve this condition, high-efficiency modes are especially useful in parallel ...

The complete Guide to Series and Parallel batteries

Jul 28, 2023 · Introduction: Batteries are an essential component of numerous devices and systems, from portable electronics to renewable energy storage solutions. Understanding how ...



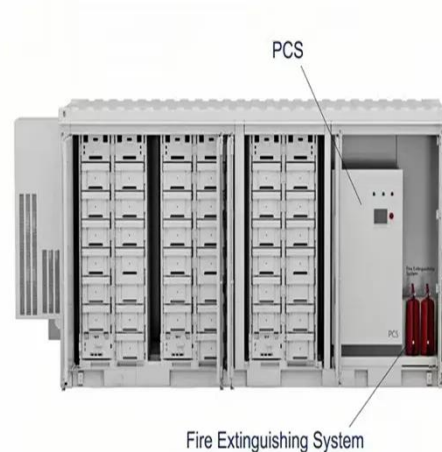
How to connect parallel battery cabinets

Can a battery be connected in parallel? Do not connect batteries with different chemistries, rated capacities, nominal voltages, brands, or models in parallel, series, or series-parallel. This can ...



How to Connect Lithium Batteries in Series and ...

Jun 7, 2024 · We'll explore the basics and provide detailed, step-by-step instructions on how to connect li-ion cells in series, parallel, and series-parallel ...



Series, Parallel, and Series-Parallel Connections of Batteries

For example, you can combine two pairs of batteries by connecting them in series, and then connect these series-connected pairs in parallel. This arrangement is referred to as a series ...

The complete Guide to Series and Parallel atteries

Jul 28, 2023 · the series-connected batteries would also be 100Ah. In a parallel connection, the total capacity is the sum of the individual battery capacities. So, connecting two 100Ah batteries ...



How to connect parallel battery cabinets



The Ultimate Guide To Charging 2 12v Batteries In Parallel Charging 2 12-Volt Batteries In Parallel. To charge two 12-volt batteries in parallel, connect them using a battery combiner ...

Understanding Parallel Connection of Lithium ...

Apr 18, 2025 · Learn how to effectively connect lithium batteries in parallel with our comprehensive guide. Increase capacity and power output for your battery ...



EG4 Lifepower4 in parallel without rack

Dec 9, 2022 · Hi all, first post here. How do I connect these in parallel without rack? The manual states: WARNING: Do NOT parallel batteries by using jumper wires on the terminals. This will ...

Understanding Parallel Connections in DC Power ...

...

Mar 13, 2025 · No, it's not recommended to mix batteries of different capacities, ages, or chemistries in a parallel connection. Doing so can cause imbalances, ...



Series, Parallel, and Series-Parallel Connections of Batteries

Connecting batteries in parallel adds the amperage or capacity without changing the voltage of the battery system. To wire multiple batteries in parallel, connect the negative terminal (-) of ...

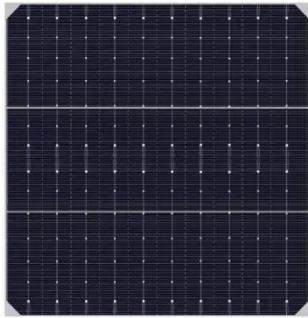
Lithium Series, Parallel and Series and Parallel

Mar 23, 2021 · Lithium Series, Parallel and Series and Parallel Connections
Introduction Lithium battery banks using batteries with built-in Battery Management Systems (BMS) are created by ...



How to Effectively Connect Batteries in Series and

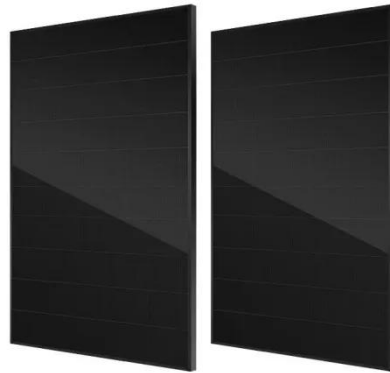
Parallel



Jan 4, 2025 · Batteries can be connected in series to increase voltage or in parallel to enhance capacity, with each configuration serving distinct functions based on specific needs. ...

Is It Dangerous to Connect Lithium Batteries in Parallel?

Is it really dangerous to connect lithium batteries in parallel? How can we understand this? Lithium batteries are ubiquitous in our daily lives, powering devices ranging from smartphones to ...



3 Batteries in Parallel: How To Connect Batteries ...

Apr 9, 2022 · Often, however, these terms refer to connecting at least 3 batteries in parallel. When you connect batteries in a series and in parallel you can ...

Batteries In Parallel: Maximize Power And Efficiency In Your ...

Mar 26, 2025 · Learn how to connect batteries in parallel to maximize power and efficiency in your setup. This guide covers the benefits of parallel battery configurations, including increased ...



Can Batteries Be in Series And Parallel at the ...

Feb 8, 2023 · Batteries are often connected in series or parallel to increase the voltage or are currently available. But can batteries be in both series and ...

Connecting Batteries In Series And Parallel: Can You Do Both? , Battery

In conclusion, connecting three batteries in a series-parallel configuration is possible and can be useful in certain applications. When deciding whether to connect batteries in series or parallel, ...



Battery Series vs Parallel Explained



Jul 10, 2025 · Did you know that wiring batteries incorrectly can reduce their lifespan by 40% or even cause dangerous overheating? Whether you're powering an RV, solar panel system, or ...

Electrical Myths, Part 3: Mixing Batteries of Different ...

Jul 30, 2019 · If you have 6V batteries though, you'll probably want one capable of analyzing an individual 6V batteries. You can make do with a 12V tester, but to match batteries you'll have ...



Connecting Batteries In Series And Parallel: Can You Do Both? , Battery

Yes, it is possible to connect three batteries in a series-parallel configuration. This involves connecting two batteries in parallel and then connecting the

Explain the rule of max 3-4 batteries in parallel

Jan 27, 2023 · Explain the rule of max 3-4 batteries in parallel In another thread there was someone who pointed at a statement in the Wiring Unlimited document saying there should be ...



CAN A BATTERY CABINET BE CONNECTED IN PARALLEL

Composition of the battery control cabinet of the energy storage system
The battery is a crucial component within the BESS; it stores the energy ready to be dispatched when needed.
The ...

Contact Us

For catalog requests, pricing, or partnerships, please visit:
<https://posecard.eu>