

SolarTech Power Solutions

Can the base station be removed from the container



Overview

Standard containers are comparatively small and used in ships that don't have the capacity of a hauler or freighter to increase the size of their cargo space. Since standard containers have a higher capacity,

What is a station container?

Station containers can be used to organise your assets in a station or structure. They have a capacity of 1,000,000 m³. Station containers have a volume of 2,000,000 m³ (10,000 m³ packaged), which means in their assembled state they do not fit in any freighter, and even unassembled they need a ship with a very large cargo hold to move them.

Can a station container be jettisoned?

Station containers can not be jettisoned nor launched into space. Assembled, they are too large to fit inside any ship's cargo hold, meaning they can only be used in stations for organizational purposes. They contain auditing functionality, which stores a log showing:

Where should a station container be built?

I'll just wade through my mess Most Station Containers need to be built where they are needed as they do have a high volume even when packaged; 10,000, 50,000 or 100,000 m³ for Station Container, Station Vault and Station Warehouse respectively.

What if a bunkering station is closed or semi-enclosed?

Closed or semi-enclosed bunkering stations shall be subject to special consideration within the risk assessment. 8.3.1.2 Connections and piping shall be so positioned and arranged that any damage to the fuel piping does not cause damage to the ship's fuel containment system resulting in an uncontrolled gas discharge.

What happens if I fail to repackage or rename a station container?

Station containers use logging. You have to wait three weeks after the last

audit log entry to repackage or rename a station container. A failed attempt to repackage or rename an station container generates a new audit log entry, which resets the timer.

Can items inside a container be repackaged?

Items inside a container can not be repackaged, repaired, contracted, sold or delivered - they have to be moved to the item hangar for these actions. Station containers use logging. You have to wait three weeks after the last audit log entry to repackage or rename a station container.

Can the base station be removed from the container

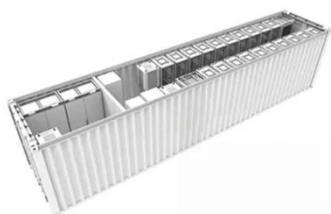
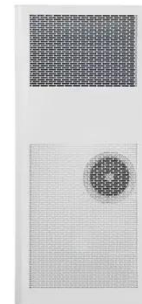


?Docker???!???Container Station???????

Sep 11, 2023 · ?? ???? ,??????QTS
5.1???? ,???????????????? ,?????Container
Station(?????Docker)????????????

Updated container station and all empty now??

Nov 30, 2021 · I just updated the container station app. To my surprise, when I started container station I saw that there were no containers or images in the app. Anyone noticed this? Does it ...



Vodacom tests shipping container base station

May 4, 2015 · They repackaged the base station equipment inside a compact steel structure that is then bolted to the roof of existing shipping container shops. This means that new sites can ...

Stowage application for Non-DG Batteries (including Lithium

Feb 16, 2022 · In extreme cases of containers already loaded on board, a vessel found to be containing Non-DG Batteries, it may be necessary to have the container re-stowed whilst ...



[Critical] Container stuck

Jun 24, 2021 · Console Terminal cannot be opened, of course, because the container isn't really running. Restart or remove commands also just end up in never-ending spinning wheel. I have ...

Container Specification

Oct 18, 2022 · Hapag-Lloyd has always put a strong focus on product quality, innovation and eco-friendliness, and maintains an active dialogue with authorities and container manufacturers.

...



Reimport Container Station Data

Apr 1, 2025 · Hey all, Since I just recently wiped my NAS and reinstalled with QuTS



Hero, I would like to get my Containers up and running again. I backedup my Container folder with Hybrid ...

40 CFR Part 264 Subpart I -

(b) A containment system must be designed and operated as follows: (1) A base must underlie the containers which is free of cracks or gaps and is sufficiently impervious to contain leaks, spills, ...



How to upgrade existing container app · Issue #53

Feb 6, 2018 · I have managed to create a config that works with Container Station. But I cannot figure out how to update existing, already installed application to a new version when new ...

RCRA Training Module: Introduction to Containers (40 ...

Jun 25, 2021 · This module reviews two sets of regulatory requirements for containers: requirements that pertain to the management of hazardous waste containers and regulations ...



???Container Station?????----??? ...

May 20, 2024 · ???,???Cherry,???????????
??,?????NAS?docker????~??Cherry?????T
S-464C2?????5?? ...

[GUIDE] Portainer docker on Container station

Dec 8, 2022 · This will then detect all your existing containers that were created previously using container station. They will also now be shown in portainer. You can also now create your ...



Stuck App in Container Stations brings down the whole NAS!



May 28, 2025 · It's happened to me several times: I try to stop a running container and it fails to stop and it can't be force-stopped or killed either. When this happens, Container Station itself ...

????one
????????????????????

Mar 5, 2021 · 1?Empty Container Release to Shipper(???????):??????????????????? 2?Gate In to Outbound CY(???????):????????? ...



Why the containers are being recreated and they can not be removed

Aug 6, 2018 · First everything is deleted, but then the containers are restarted and recreated automatically even though I deleted this folder from the computer with the application.

I need to move container station to another volume keeping

Mar 30, 2022 · To move the app container station to another volume, you will need to remove it and reinstall it using App center. During the installation you will be able to select the desired ...



Contact Us

For catalog requests, pricing, or partnerships, please visit:
<https://posecard.eu>